

## ZL-3204 *Zwei L* Stainless Steel Towel Bar

### Features

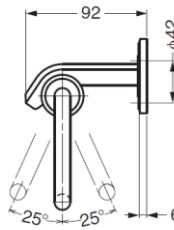
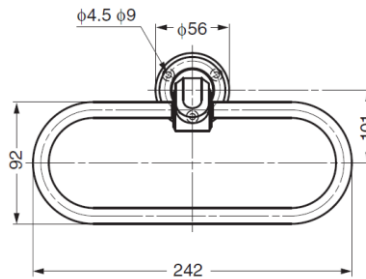
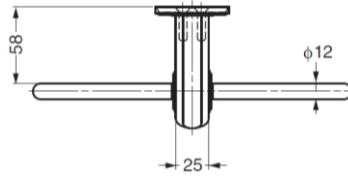
- Superior "Zwei L Finish" - *Zwei L* represents the very pinnacle of ultra-premium Japanese hardware design. The contrasting bands of mirror finish and lustrous satin on a faceted profile give a jewel like finish that highlights and enhances any industrial design

### Material

- Stainless steel 316, *Zwei L* finish

### Parts Included

- Countersunk head wood screw 4.1×32 (SUS)
- Plug
- Hex key
- Special tool for the ring



<b>Part No.</b>
<b>ZL-3204</b>

## ZL-3205 *Zwei L* Stainless Steel Towel Bar

### Features

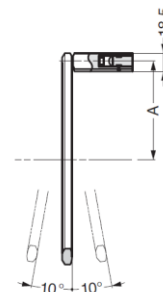
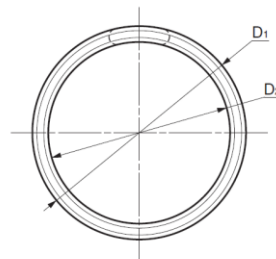
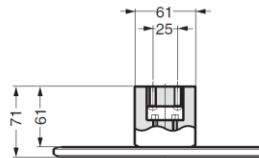
- Superior "Zwei L Finish" - *Zwei L* represents the very pinnacle of ultra-premium Japanese hardware design. The contrasting bands of mirror finish and lustrous satin on a faceted profile give a jewel like finish that highlights and enhances any industrial design

### Material

- Stainless steel 316, *Zwei L* finish

### Parts Included

- Round head wood screw 5.8×65 (SUS)
- Plug
- Hex key



Part No.	D <sub>1</sub>	D <sub>2</sub>	A
ZL-3205-172	172	140	78
ZL-3205-215	215	183	99.5